

THE FRANKLIN CREEK CHRONICAL



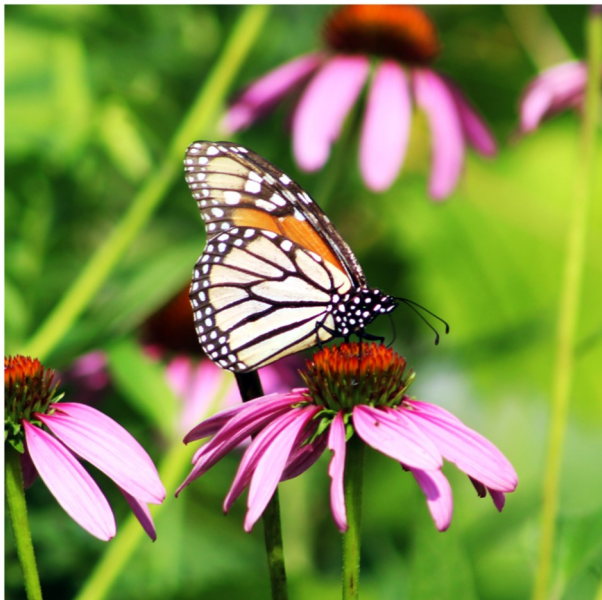
Fall 2022

- Preserve - Engage - Understand -

The Importance of “Rewilding” Your Yard

This year we had two pieces of information come out about Monarch butterflies. On one hand, we had some hope that their overwintering numbers in Mexico may be increasing and that they may be adapting their migration to the change in climate. On the other, this increase is not really seen in their summering grounds in the USA and is so small that drought events could set back the species even more. This year the International Union on the Conservation of Nature listed the Monarch butterfly as endangered. This is not the same as having it listed as federally endangered, like another Illinois native pollinator the Rusty-patch Bumblebee, but it is one step in that direction and provides a grim outlook for this species.

Unfortunately, Monarch butterflies are not the only pollinator in decline. One way we can help increase populations of these species is by planting native plants that will bloom at all times during the growing season, so they can nectar or eat off of them. Another way is to plant species that are considered larval host plants for these pollinators. Larval host plants are those that butterflies and other pollinator’s caterpillars need to survive. The one everyone should know is Milkweed. Monarch caterpillars only eat milkweed. Fritillary caterpillars only eat violets, etc.



Monarch on Purple Coneflower

© Megan Sneyd



Swamp Milkweed

© Katie McBride

Continued on Page 2

Continued from front page...

The best thing to do would be to plant larval and nectaring plants and plant as much as you can! At Franklin Creek, the land is not only forested but it is also prairie habitat that provides this much needed resources for our pollinators. At FCCA, we dedicated this year to educating others on why pollinators are important. We got off to a slow start, but we have begun work on a pollinator garden outside of our house that we have been rehabbing the last 5 years. To make sure it is also a haven for pollinators but not necessarily a prairie, we are in the process of “rewilding” our yard by creating a pollinator garden along the front driveway with the help of an Illinois Clean Energy Grant, Ashton-Franklin Center FFA, Lee County Master Gardeners and Naturalists, local students, and volunteers.

We hope you were able to make the pollinator workshop we had at the site on Aug 19th. Plants will be in the ground soon and in the next couple of years it will be a haven for our Monarch and other butterflies. We will cap off the season with our Evening at the Mill: Pollinator Trivia. All proceeds from this event will go to help maintain this garden. You do not need to know anything about pollinators to participate, but you will learn about them and have fun doing so! More information can be found on Page 4.



Pollinator Workshop

© Heather Herakovich



© Steve Toole



© Katie McBride



© Katie McBride

“Slowing down with nature doesn’t cost a cent. All it takes is the desire to help you heal from the stresses of fast-paced living. When will you try this prescription for good health? “ -Cliff Knapp



© Heather Herakovich

Franklin Creek Grist Mill

The Mill is open until November. Stop in and grab your very own Franklin Creek keepsake. Mill rentals, school groups, and private tours will be available by request. Please check our website and social media for more information before heading out. Open Sat-Sun 12PM-4PM April-October and also on Fridays 12PM-4PM June-August.



© Heather Herakovich

Connect and shop with us!



1893 Twist Rd.
Franklin Grove, IL 61031



(815) 456-2718



www.franklincreekconservation.org



@CreekFranklin



/franklincreekconservation



Pollinator Trivia Night

October 15, 2022 6PM-8PM

Put your pollinator knowledge to the test at the FCCA's annual Trivia Night. Work with a team of up to six to see what you really know about this important group of animals! No pollinator knowledge is needed to have fun! Earn prizes for getting the most questions correct or emerging victorious in our bonus games. Dinner and Trivia begin at 6PM. There will be a maximum of 50 people allowed to register. If you have any questions please call 815.456.2718. Tickets are \$25/person or \$15/student with valid ID.



© Katie McBride

Save The Dates

Events

- Sept 10th—Grist Mill Grind 10K and 1mi Fun walk
- Oct 15—Evening at the Mill: Pollinator Trivia
- Oct 29-30—Mill Last Weekend Open

Nature Hike

- Sept 25 at 9AM meet at the Grist Mill

Grinding Demos at the Mill

- Sept 25 & Oct 29, 12-4PM

*More information can be found on our website:

www.FranklinCreekConservation.org*

Some events will require RSVP. You can RSVP on our website, by phone 815.456.2718 or email engage@franklincreekconservation.org. All programs and dates are subject to change.

Volunteers Needed!

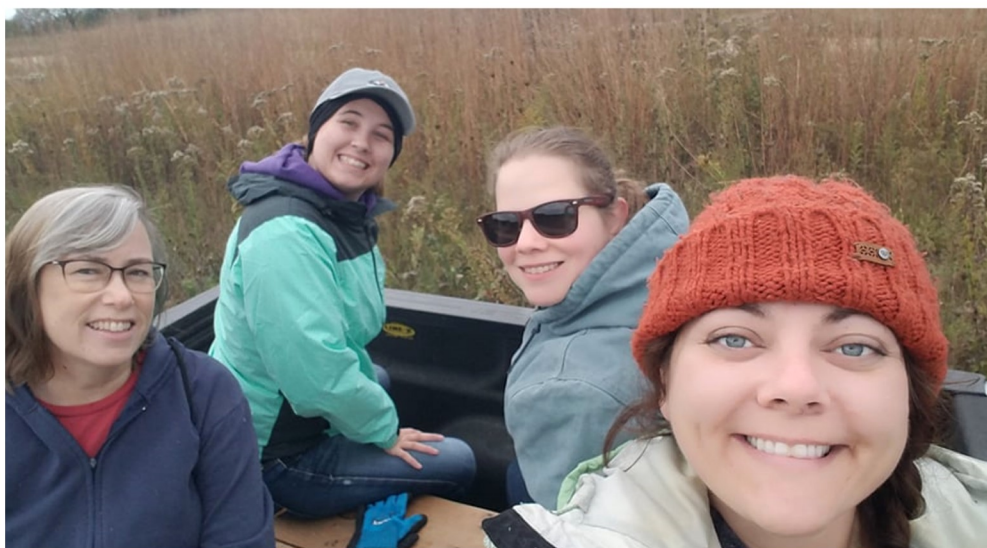
FCCA provides a variety of different volunteer activities for all age groups and experience levels. From stewardship and maintenance to Grist Mill Docent, we have opportunities for everyone!



© Katie McBride



© Grace Johnson



© Jennifer LeMoine

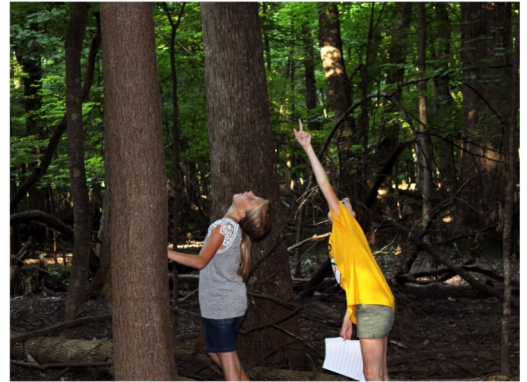
If you would like to learn more about how YOU can get involved at FCCA please contact Heather at 815.456.2718 or at engage@franklincreekconservation.org.

Have You Made Someone's Day?

We need your help! Help us get families and individuals involved in nature, and protect, restore, and maintain the natural areas we all love so much!



"Our mission is to care for the natural areas of Franklin Creek for current and future generations."



© Megan Sneyd

Yes, I wish to support FCCA!

- ☐ BFF, \$1000 and up \$ _____
- ☐ Ally, \$500-\$999 \$ _____
- ☐ Buddy, \$250-\$499 \$ _____
- ☐ Friend, \$100-\$249 \$ _____
- ☐ Supporter, \$1-\$99 \$ _____



Please indicate if anything applies to your donation

- ☐ Undesignated, to be used to fulfil our mission where most needed.
- ☐ Designated for Illinois Clean Energy Stewardship Match Grant.
- ☐ In Memory/ Honor (circle one) of: _____
- ☐ Please contact me about how I can be a lifelong supporter through legacy giving options (estate plan, stocks, bonds, mutual funds, and qualified charitable distributions (QCDs)).
- ☐ Please contact me about volunteering.

FULL NAME(S)

ADDRESS

CITY

STATE & ZIP CODE

PHONE NUMBER

EMAIL ADDRESS TO GET PROMPT FRANKLIN CREEK UPDATES

Checks should be made out to Franklin Creek Conservation Association and mailed to:
1893 Twist Road, Franklin Grove, IL 61031

Online one-time and reoccurring credit card donations can be made at our website:
www.franklincreekconservation.org

Franklin Creek Conservation Association is a non-profit registered 501(c)(3). Your gift is tax-deductible to the fullest extent of the law.